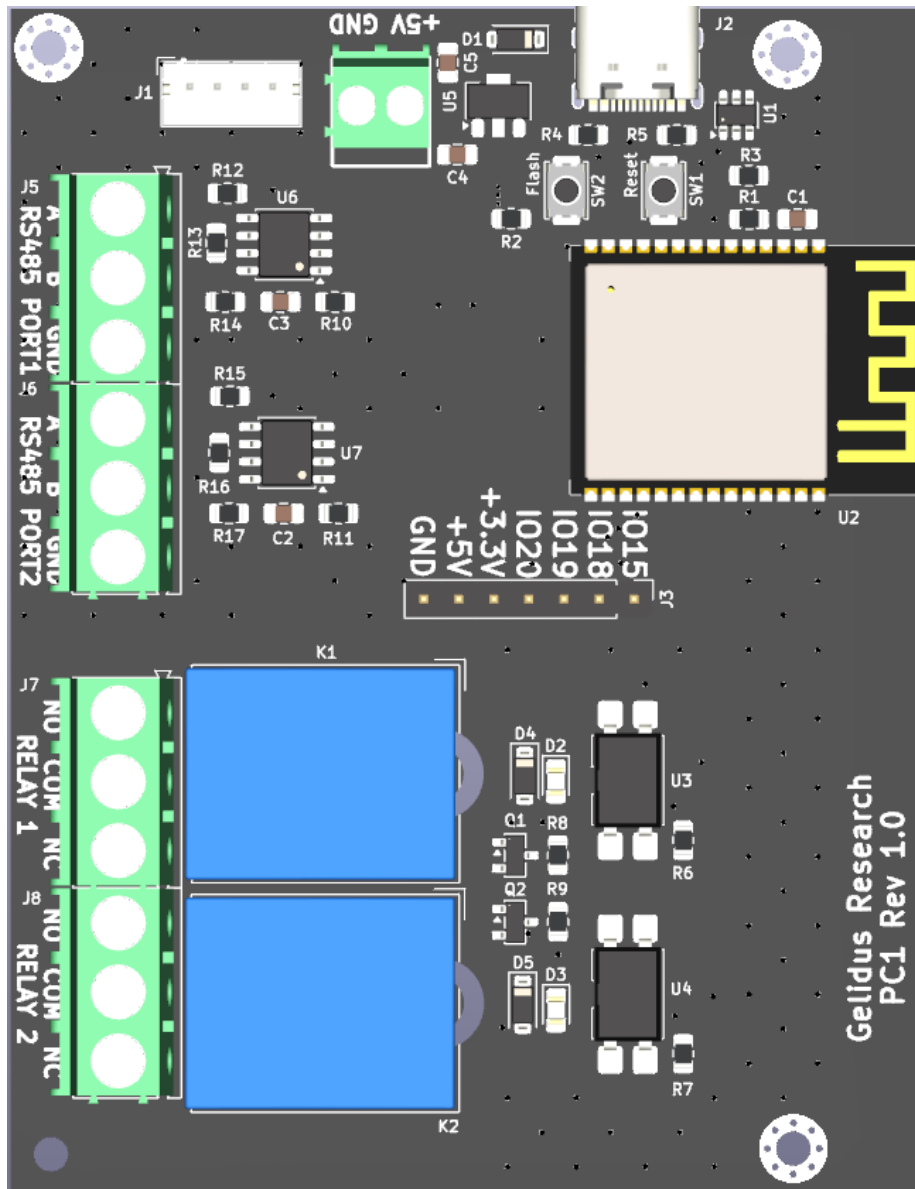


Gelidus Research Pool Controller

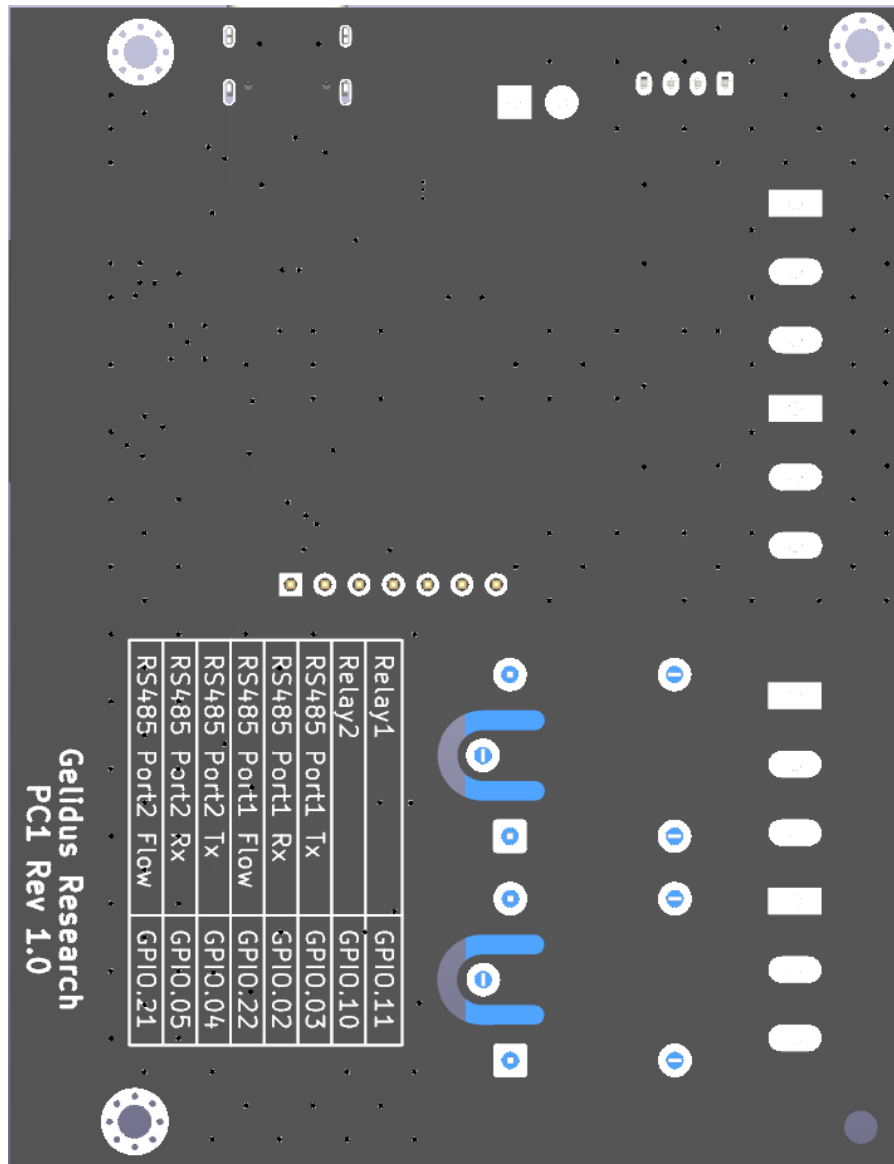
Hardware Reference Manual

MainBoard - Top



J1	External Connector PH2.0 to USB-C
J2	Internal USB-C Connector
J3	Utility PIN Header and Power: +5v 1A Max, +3.3v 250ma Max GPIO15,18,19,20
J4	AUX DC Power Input +5V 1A
J5	RS485 Port 1: Pin 1 A, Pin 2 B, Pin 3 GND
J6	RS485 Port 2: Pin 1 A, Pin 2 B, Pin 3 GND
J7	Relay 1: Pin 1 NO, Pin 2 COM, Pin 3 NC - 10A @125-250V
J8	Relay 2: Pin 1 NO, Pin 2 COM, Pin 3 NC - 10A @125-250V
SW1	Reset
SW2	Flash Enable on Boot

MainBoard - Bottom



Relay1	GPIO.11
Relay2	GPIO.10
RS485 Port1 Tx	GPIO.03
RS485 Port1 Rx	GPIO.02
RS485 Port1 Flow	GPIO.22
RS485 Port2 Tx	GPIO.04
RS485 Port2 Rx	GPIO.05
RS485 Port2 Flow	GPIO.21

Gellidus Research
PC1 Rev 1.0

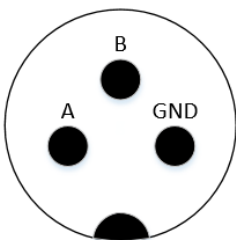
Relay 1	GPIO11
Relay 2	GPIO10
RS485 Port 1 Tx	GPIO03
RS485 Port 1 Rx	GPIO02
RS485 Port 1 Flow	GPIO22
RS485 Port 2 Rx	GPIO04
RS485 Port 2 Rx	GPIO05
RS485 Port Flow	GPIO21

Optional Enclosure

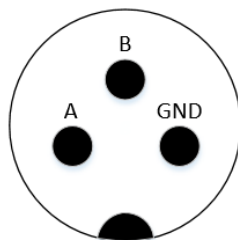


Aircraft connector pinouts

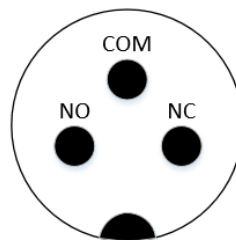
RS485 Port 1



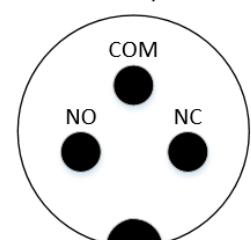
RS485 Port 1



Relay 1



Relay 2



Schematics

Main Board

